

IN THE VERSES READ WE HAVE MAN'S FRAILTY AND MORTALITY SET FORTH UNDER TWO IMPRESSIVE FIGURES:

L. A FLOWER 1 Peter 1:24. Man compared to a flower.

1. From its origin-the earth. Man came from dust. Gen. 2:7.

2. Its Beauty. Man is the goodliest flower framed by his Maker's hand. Man is like the flower:
1. The blossom which opens;
2. Expands, reaches its perfection.
3. Fades, then falls to its native earth.

3. Its frailty. "But a few days."

4. Its end. If allowed to grow soon fades and falls off, but liable also to many casualties:

1. From the hand of men.
2. The tooth of animals.
3. The nipping frosts.
4. The mowers scythe. The

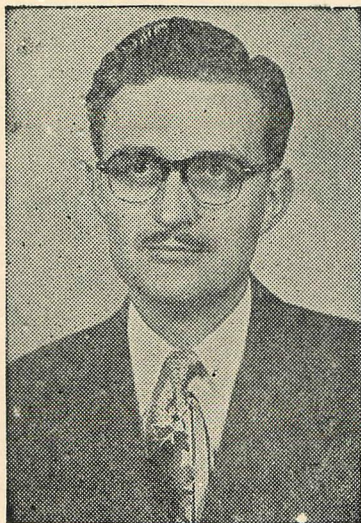
flowers falls off to make way for the fruit. If prepared, man dies only to ripen into a happier sphere. *1. To form a true estimate of time & eternity*

2. A Shadow. James 4:14 - *2. To improve our fleeting stay here*

3. To make diligent use of our time
4 Prepared always for life's unexpected termination

GOSPEL MEETING

LONE
OAK
CHURCH
OF
CHRIST



LONE
OAK
ROAD

L. ARNOLD WATSON

July 17 through July 27

Services Daily at 10:00 A. M. and 7:30 P. M.

Services Sunday 10:00 A. M. and 7:00 P. M.

L. ARNOLD WATSON, Preacher
of Dearborn, Michigan

James McGary, Mayfield, Ky.
will direct Congregational Singing

A Warm Welcome Awaits You
