

- 1-FAILURE TO ATTEND REGULARLY.....
 - 1-SUNDAY MORNING SICKNESS.....
 - 2-IT NEVER INTERFERES WITH THE APPETITE...
 - 3-IT NEVER LAST MORE THAN TWENTY FOUR HOURS.
 - 4-NO PHYSICIAN IS EVER CALLED.
 - 5-IT ALWAYS PROVES FATAL IN THE END (IT DESTROYS THE SOUL)
 - 6-
 - IT COMES ON EVERY SUNDAY MORNING.
 - 1-NO SYMPTOMS ARE FELT SATURDAY NIGHT.
 - 2-THE PATIENT SLEEPS WELL AND EATS A HEARTY BREAKFAST.
 - 3-ABOUT CHURCH TIME THE ATTACK COMES ON, AND CONTINUES UNTIL THE MORNING SERVICES ARE OVER,
 - 4-THEN HE FEELS BETTER AND EATS A BIG DINNER AND?
 - 5-IF HE CAN'T GO AROUND, HE DRIVES RIGHT BY THE CHURCH BUILDING ON HIS WAY TO THE PICTURE SHOW, OR TO SEE UNCLE JOE,
 - 6-ABOUT NIGHT, HE FEELS ANOTHER SPELL COMING ON, AND RUSHES HOME, AND ALL MOST DIES UNTIL IT IS TO LATE TO GO TO CHURCH.
 - 7-MONDAY MORNING COMES? AND ALL IS WELL, NO MORE SYMPTOMS OF THE ATTACK until the following SUNDAY MORNING.

2-2-TIM.2:15) STUDY TO SHEW THYSELF APPROVED.....

- 1-WHAT DO WE READ,
(TRUE STORY, TRUE CONFESSION, TRUE DETECTIVE, SEX MAGAZINES, (DID PAUL MEAN FOR TIMOTHY TO READ THESE THINGS)
(READ AND STUDY CAREFULLY THE BIBLE)

3-PREACHERS..???????????

- 1-GOOD PREACHERS
- 2-INDIFFERANT PREACHERS
- 3-BAD PREACHERS....
- SOME STAY WHERE THEY ARE BY MAJORITY VOTE AND OTHERWISE. ETC.

4-ELDERS???????????????????

- 1-GOOD ELDERS
- 2-INDIFFERANT ELDERS
- 3-BAD ELDERS... SENIOR ELDER???????????????

PROVERBS 6:16....THESE SIX THINGS DOTH THE LORD HATE: YEA, SEVEN ARE AN ABOMINATION UNTO HIM.

19-A FALSE WITNESS THAT SPEAKETH LIES, AND HE THAT SOWETH DISCORD AMONG BRETHERN.

Diabolical opposition

Rom - 12 - 14, 15

Mat. 5 - 44

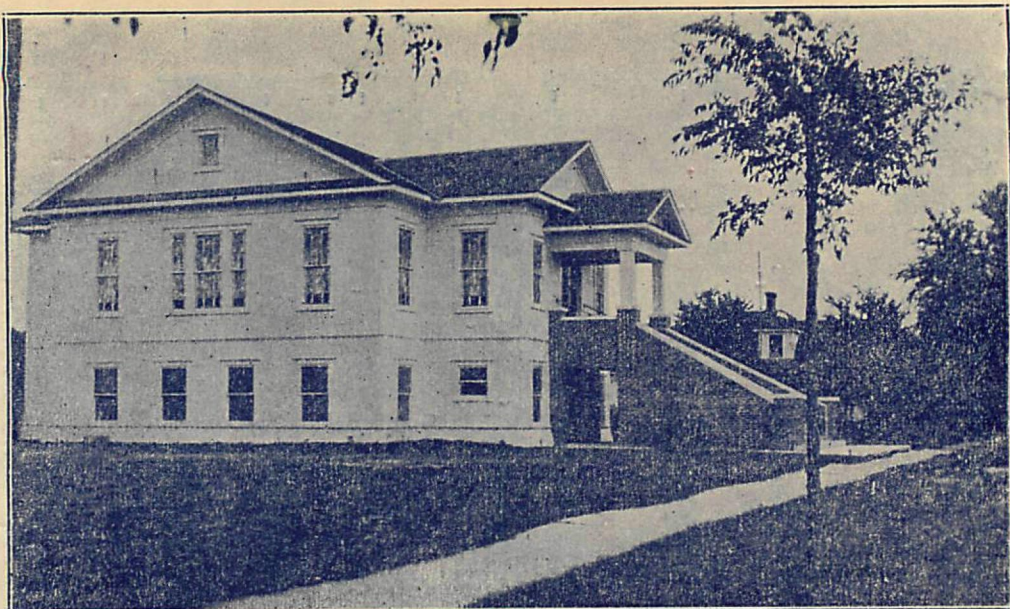
DEACONS

G. C. Bourland

Smith Hooten

Bedford Stewart

L. W. Wimbish



ELL

J. H.

J. W.

Jess

(Min

Church of Christ
Itasca, Texas